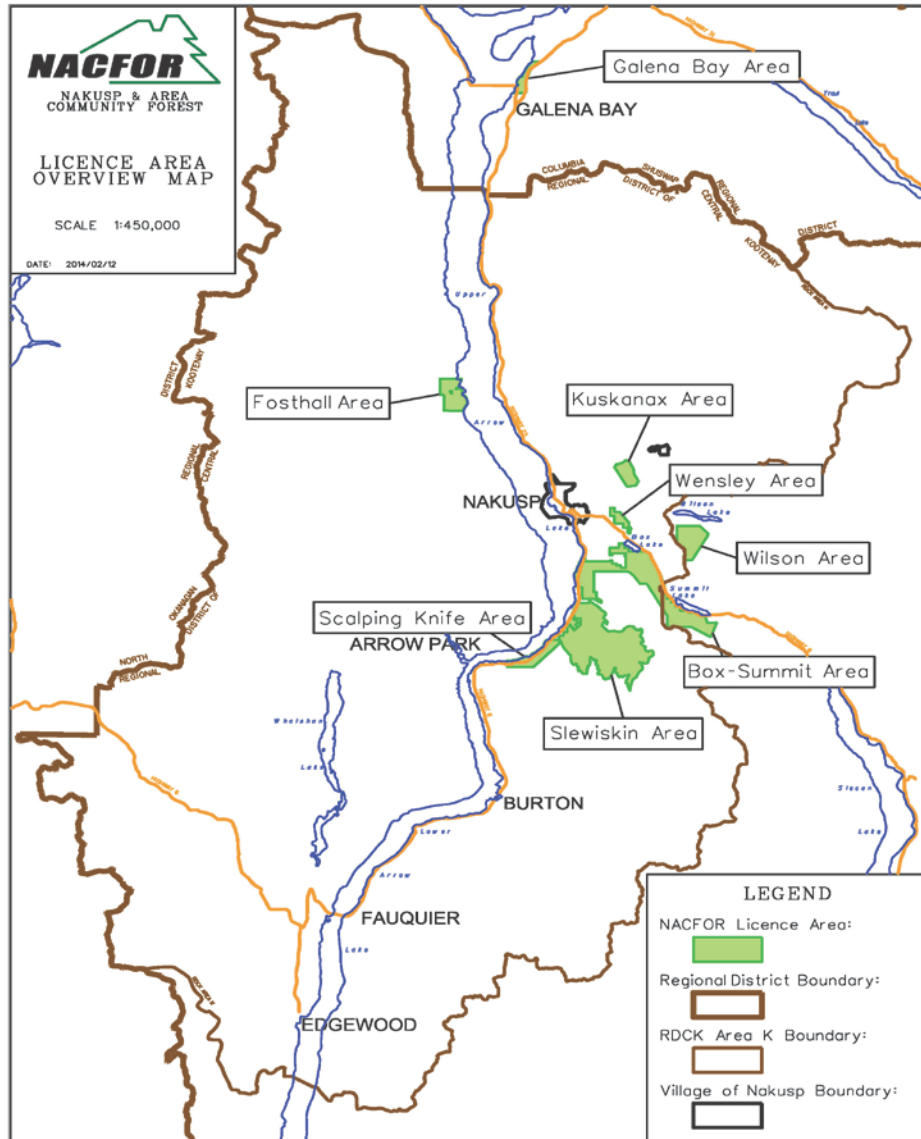


Nakusp & Area Community Forest (2013) Inc. 2015 Year In Review



NACFOR CFA Land Base



- Limited land base
 - Geographically separate charts
 - Many constraints!
 - Terrain
 - Domestic Watersheds
 - Community Watersheds
 - Species at Risk
 - Interface areas
 - Visual Quality
 - Riparian areas
 - Soils
 - BioDiversity
 - Old Growth Mgmt Areas
 - Pests and Disease
 - Archaeological & cultural heritage values
 - Fisheries
 - Recreation Features
- Among Others! These constraints are all managed**

2015 Highlights – Harvesting and Road Projects

A total of 20,024 m³ was harvested in three cutting permits:

Cutting Permit	Location	Volume (m ³)	Area (ha)
104 – 2	McDonald Creek	2,412	5.5
101	Galena Bay	8,272	24.0
110	Box Mountain	9,340	33.6
Total		20,024	63.1

Approximately 2.5 km of road was constructed in the Box Mountain area and Upper Lookout area

- To address environmental and safety concerns an old bridge on one of NACFOR's permitted roads in the McDonald Creek area was removed
- The Forest Service bridge on the Summit FSR was repaired to meet log hauling standards



2015 Highlights – Development & Silviculture

Development

Forest development was initiated in four new development areas to support NACFOR's Timber Supply Inventory: Scalping Knife, Lower Lookout, Wensley Creek and East Slewiskin

Approximately 55,000 m³ is now being developed for future harvest



Managing for all resource values



2-year old Lw seedling

Silviculture

- 94,000 seedlings were planted in the McDonald Creek drainage
- Survival Surveys were carried out on the 2-year old seedlings in Fosthall and McDonald Creek
- Approximately 70,000 seedlings were sown for 2017 planting

2015 Highlights – Invasive Species Management

NACFOR's storage yard on Hot Springs Road was inventoried for invasive plants by our summer student. Invasive plants on the site are Blueweed, Scotch Broom, Bull Thistle, Orange and Yellow Hawkweed, Oxeye Daisy, Hoary Alyssum and Burdock. The student wrote an Action Plan, and our summer crew managed to hand pull or cut many plants and to cut and collect the blueweed before it went to seed.



2015 Highlights – One CP & ESMS

One CP - Cutting Permit K2S 001

NACFOR is now operating under the new K2S 001 cutting permit. This cutting permit covers the entire CFA land base and has a 4-year term from October 30, 2015 to October 29, 2019

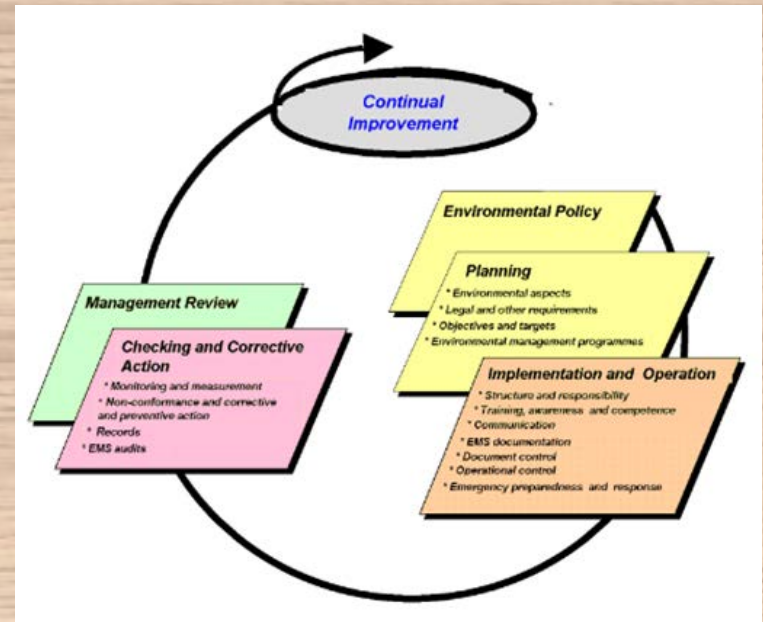
- The One-CP process is more administratively streamlined and provides more operational flexibility

Environmental and Safety Management System (ESMS)

The ESMS was finalized in December 2015 and adopted by the Board of Directors in February 2016

Objectives of the ESMS are:

- to develop a comprehensive, systematic and documented approach to managing NACFOR operations in compliance with legislation and acceptable environmental standards
- to provide the NACFOR Board of Directors, shareholder and public with the assurance that the CFA land base is being well managed with established policies and processes.



NACFOR's ESMS will continue to improve forest safety practices and will be part of the foundation for the due diligence required under the forestry legislative framework in B.C.

2015 Highlights – NACFOR Legacy Fund

The Village of Nakusp has established a NACFOR Legacy Fund (Bylaw #653, 2014) to hold the funds and earn interest until a policy is developed for deciding how these funds and NACFOR's future dividends can best be used to benefit Nakusp and RDCK Area K. This presentation represents the significant success of the Community Forest under the guidance of the Board of Directors and the management by True North Forestry Consulting Ltd of Nakusp.



Presentation of 2013 Dividend of \$582,064 for NACFOR Legacy Fund

Pictured above are (back row l-r) Directors Tom Zeleznik, John Cann, Lee-Anne Marshall, (front row l-r) Laura Latter, President Kathy Smith, Frank Poirier, Mayor Karen Hamling and Hugh Watt of True North Forestry Consulting Ltd. Missing from the photo are Directors Bill Tobey and Cam Leitch.

2015 Highlights – Community Donations

Cash and In-Kind - \$29,256

Name of Organization	Type of Donation
Nakusp Ski Club – Summit Lake Ski Hill - New Day Lodge Project	Building logs valued at \$11,056
Rotary Club of Nakusp – NSS Student to Adventures in Forestry	\$300
Arrow and Slocan Lakes Community Services - Food Bank	\$2000
Arrow and Slocan Lakes Community Services – Minto House Bus	\$1000
Nakusp Volunteer Fire Brigade - Fireworks trailer	\$3000
Burton Volunteer Fire Department - Training support	\$1000
Fauquier Volunteer Fire Brigade - Training support	\$1000
Edgewood Volunteer Fire Department - Training support	\$1000
Arrow Lakes Hospital Foundation - Light Up the Hospital Lights	\$2000
Nakusp Medieval Society - 2016 Sponsorship	\$500
Kootenay Sufferfest Society - 2016 Sponsorship	\$500
Nakusp and Area Youth Society - Office equipment and supplies	\$2000
PALS- Protecting Animal Life Society - Lost & Found, Spay/Neuter programs	\$1000
Nakusp and Area Community Foundation - Operating Costs	\$1200
Rotary Club of Nakusp - Waterfront Lighting Project	\$2000
TOTAL	\$29,256

2015 Highlights – Community Donations

Logging Truckloads of Firewood

Name of Organization	Type of Donation
Nakusp Centennial Golf Club – O’Connor Silent Auction Fundraiser	1 truckload of firewood
Nakusp Volunteer Fire Brigade – July 1 st Fireworks fundraiser	1 truckload of firewood
Burton Volunteer Fire Department – Silent Auction Fundraiser	1 truckload of firewood
Lower Arrow Lakes Conservation Association	2 truckloads of firewood
TOTAL COST TO NACFOR	\$4,750

Local organizations really value the logging truckloads of firewood that NACFOR is able to offer for donation. Those locals who burn wood to heat their homes get pretty excited at the opportunity of winning all that firewood in a raffle or as winning bid in a silent auction.

2015 Highlights – Donation Policy

The Board developed a donation policy to establish objective criteria for the distribution of funds from NACFOR operations to the local communities through merit-based donation processes.

The NACFOR Board of Directors will annually budget up to \$50,000 for donations and the program's administration fees. Firewood donations account for up to \$10,000 of that annual budget, and administration fees will not exceed \$5,000, leaving \$35,000 for cash donations. Any unspent administration fees will be allocated to donations under/over \$1,000.

Eligible Organizations

Legally established entity such as a registered charity or registered not for profit society in good standing, or an established club or organization.

Eligible Project Locations

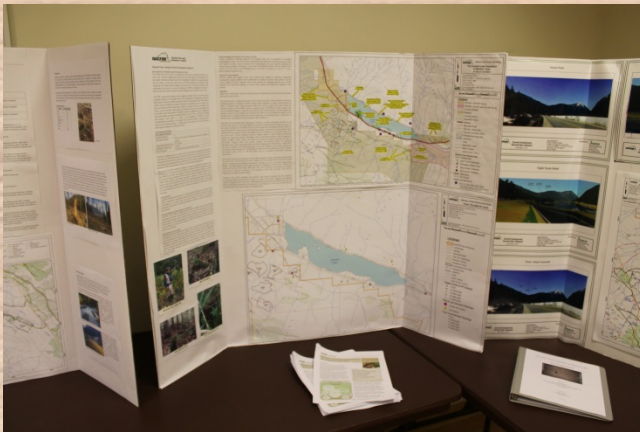
Within the bounds of the Village of Nakusp, RDCK Defined Area K and including the Summit Lake Ski Hill.

Project Eligibility

Project eligibility / ineligibility will include but not be limited to:

Eligible Projects	Ineligible Projects
✓ Forestry based initiatives	× Projects that relieve government responsibility
✓ Youth	× Ongoing operational costs
✓ Economic development	× Retroactive or debt retirement funding
✓ Recreation	× Activities of a religious or political nature for adults
✓ Arts and Culture	
✓ Environmental programs	
✓ Social programs	

2015 Highlights – Community Engagement Open House and AKBLG Booth



The Open House was held May 27th. We had the best turnout yet, almost 30 people with a keen interest in NACFOR's activities, but not many comment sheets were submitted or returned.



NACFOR was happy to participate in the trade show at the AKBLG when it was held in Nakusp in April as one of the benefits of our Silver level sponsorship of \$2000.

2015 Highlights – Educational Partnerships

Selkirk College: the second year forestry class spent one day on a field lab assignment collecting CP development data for the Wensley/UpperBrouse permit. The class was paid an honorarium for the work to support their spring field camp. This partnership supports NACFOR's strategic goal to provide training opportunities for entry-level forest workers and youth.



NSS Science & Technology Forest Management Tour: NSS Science & Technology Grades 10 & 11 students spent a day at Summit Lake to learn about sustainable forest management and community forest goals for managing the land base. We discussed different forest management phases – planning, operational, reforestation – and then headed into the forest to collect stand level data on trees and soils. We were also able to meet up with the toad biologist to learn about telemetry and how it is used to track toads at Summit Lake.

2015 Highlights – Educational Partnerships



Tree Planting with Nakusp Elementary School:

In June NACFOR hosted 4 classes (approximately 75 students) from NES on a field trip to CP 104 in the McDonald Creek area. The students learned about how seedlings grow and planted a few trees, and did some plant ID activities. Each tree was labelled with their name so tree growth can be tracked over time. Planting was followed by a picnic at McDonald Creek Park.

A group of NES students who had planted trees on CP 103-1 last year stopped to check their trees. The survival rate was surprisingly good!

Partnership with SD#10 Arrow Lakes was formalized in late 2015/early 2016:

Goals of our Partnership:

- To enhance communication between our organizations
- To expand and develop hands-on learning opportunities and place-conscious project-based learning experiences
- To collaboratively plan rich learning experiences for National Forest Week each year
- To develop and maintain an updated inventory of community and regional resources and projects which intersect with our mutual work



2015 Highlights – Logger Training Initiative

- The inaugural Logger Training Initiative wound up at the end of February 2016 after 11 weeks of training.
- NACFOR partnered with Selkirk College and Kaslo and District Community Forests to develop the program with the hopes of it becoming an on-going regional logger training program.
- Objective: to address a need for workers by introducing individuals into the logging industry preparing them to begin a career as a logger.
- Concept: to provide a basic core of courses coupled with extensive on the job workplace training in a real logging setting.
- Focus: Producing a skill set and attitude that is suitable for hire as trainee/junior loggers by local contractors.
- NACFOR supported the program through guidance, helping in administrative roles, and by providing training sites.
- From the press release: "The 11-week program began with nine participants and ended with eight. Two of the individuals have jobs with local loggers, and a third has a mechanic position with a local logging contractor. Another two individuals are interviewing with a local forestry development contractor. The remaining two individuals, although they do not have an insight on a position today, are very interested in pursuing a logging job."



Al Fitchett of AF Timber Co. Ltd. provided an introduction to cable logging operations for Logger Training program participants and Job Coaches.



Dunc Wassick of Dam Helicopters Inc. provided orientation and training for Logger Training program participants and Job Coaches in safety and operating procedures when working around helicopters, and supported a mock emergency evacuation of an injured worker.

Key Directions and Initiatives for 2016

Harvest Activities

- Projected harvest of 25,000 m³
- Approximately 6 km of new road construction and re-construction
- Harvest activities will focus on the Summit Lake, Box Lake, Lookout and Scalping Knife areas

Silviculture

- Plant approximately 70,000 trees
- 30 hectares of root removal
- Sow seedlings for 2018 planting program

Future Harvest Areas Under Development

- Development activities will be ongoing in East Slewiskin, North Slewiskin, Wensley areas.
- Development opportunities will be assessed in NE Scalping Knife and West Box Mountain

(see Development Areas Key Map on the NACFOR website - Projects/Future Permits)

Management activities, strategic and business planning initiatives will be on-going in order to **meet** forest management objectives, CFA obligations, and economic targets.

Key Directions and Initiatives for 2016

Applied Research

Watershed Study

- We will be working with Apex Geoscience Consultants Ltd. from Nelson to develop a hydrogeomorphic risk analysis to know how the proposed harvesting in Wensley Creek could affect water quality and quantity in the Brouse Creek community watershed and Brouse South Face domestic watersheds.

Western Toad Research

- NACFOR will continue to partner with the Fish & Wildlife Compensation Program on the 2016-2017 Summit Lake Western Toad Project. NACFOR is particularly interested in western toad movements and terrestrial habitat use. We will use this data to inform our forest practices adjacent to Summit Lake and throughout our operating area.
- This project provides an exciting opportunity to conduct some research on the habitat needs of an important local species at risk and may also provide educational work experience for one or two summer students who will be assisting with the research.

Key Directions and Initiatives for 2016

Land Base Initiative

- An on-going initiative will be continuing work on expanding the NACFOR land base. We are interested in bolstering our AAC and making up for losses due to Caribou area removal and inoperable terrain. Part of this initiative is to finalize our long term planning (aka 20 year plan) project in order to calibrate the current AAC with areas that can be logistically and economically harvested.

NACFOR Governance

- The NACFOR Board of Directors (BOD) continues to work on policy development and initiatives to provide higher level strategic direction for NACFOR. The BOD has developed Roles and Responsibilities for the BOD, Management Contractor and Village Council and presented this information to all parties. Recently Council met with the BOD to discuss the Roles and Responsibilities to provide additional guidance and direction.

Recreation

- We have applied for CBT Recreation Infrastructure funding to construct two walking/hiking trails at the Galena Bay ferry landing and Scalping Knife areas. When coupled with resource development, trails and recreation areas can be a low cost asset with tremendous social and community benefit.

Key Directions and Initiatives for 2016

Utilization Pilot Project

NACFOR is working with Zelstoff Celgar Pulpmill to improve utilization of logging waste.

The project will pilot two utilization phases:

1. chipping waste on the landing under a Celgar salvage licence
2. hauling undersize (non-merchantable) wood to the pulpmill in Castlegar

Goals of the project are to improve fibre utilization and recover more volume and value from NACFOR's harvest operations.



NACFOR - Community Forestry

“Empowers people living in forest communities to manage local forests in a way that is respectful of local values and priorities”

