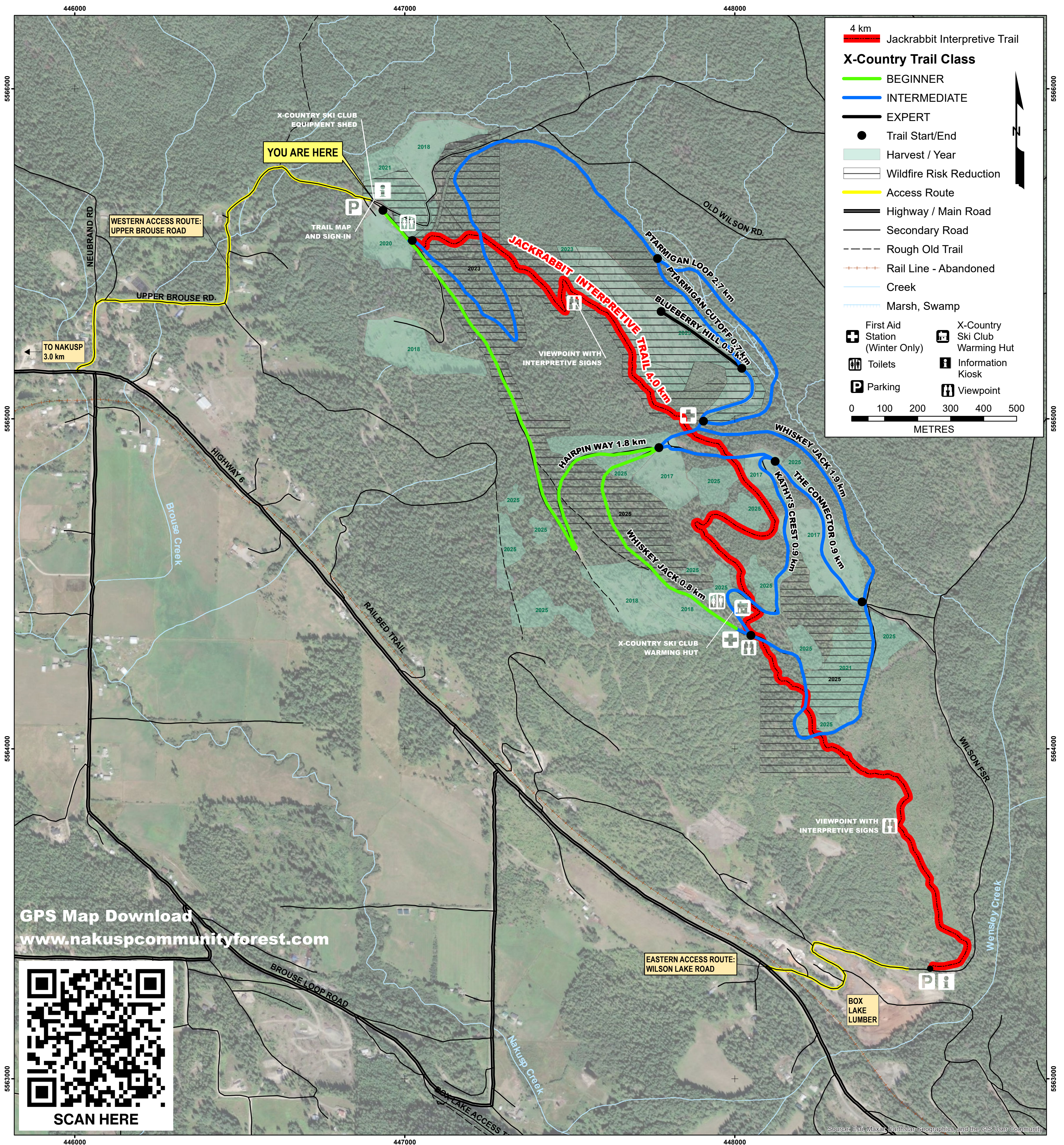


JACKRABBIT INTERPRETIVE TRAIL and WENSLEY CREEK CROSS COUNTRY SKI TRAILS

No motorized use on Jackrabbit Interpretive Trail



Trails are shared by many and maintained by few, so follow trail etiquette.

- Keep to designated trails
- Be aware and considerate of other users
- No dogs are allowed on ski trails Dec 1 - April 1

IMPORTANT

Persons using this area assume all responsibility for personal injury or damage to equipment resulting from the use of these trails.

JACKRABBIT INTERPRETIVE TRAIL PROJECT PARTNERS:

*Columbia Basin Trust
Nakusp and Area Community Forest
Nakusp and Area Community Trails Society*

WENSLEY CREEK CROSS COUNTRY SKI TRAILS

*Managed by
Arrow Lakes Cross Country Ski Club*

THIS TRAIL WAS MADE POSSIBLE WITH FUNDING FROM THESE PROJECT PARTNERS:



Recreation Sites
and Trails BC